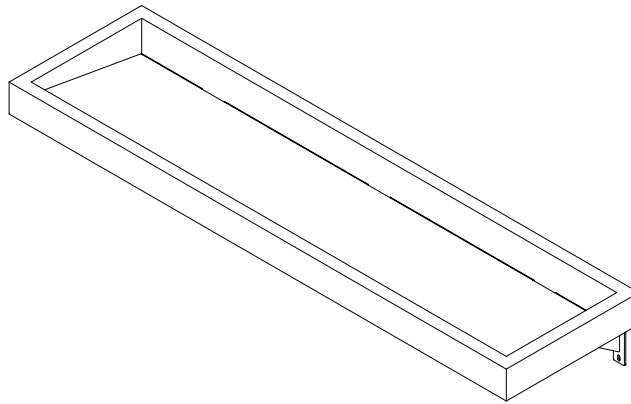


TSL.MON.C.90

MONOLITH BASIN SYSTEM TYPE C | 90" LENGTH THREE USER

The Type C series is an ADA-compliant, solid surface sink designed for use with wall-mounted fixtures. This basin style is also available in one, two, or four-user lengths.



Composition

Sink	100% solid surface (acrylic/resin)
Brackets	Stainless steel
Pipeskirts	Stainless steel (brushed or powder-coated)

Fabrication

Fabricated in Canada by CNC machine with hand-finishing.

Approvals + Compliances

IPC 2009, 2012, 2015, 2018, 2021
 IRC 2009, 2012, 2015, 2018
 UPC 2009, 2102, 2015, 2018, 2021
 NPC 2005, 2010, 2015
 CSA B45.5 / IAPMO Z124-2107
 ADA
 LEED

Installation Requirements

ADA	Follow ADA basin height requirements to ensure compliance. Pipeskirts are available to conceal the pipe system.
-----	---

Optional Accessories

Side skirts	Optional caps for pipeskirts where sink is installed with exposed sides.
-------------	--

8745 Washington Boulevard, Studio D
 Culver City CA 90232
 310 410 5008
info@thesplashlabusa.com
thesplashlabusa.com



Variant Codes

TSL.Mon.C.90	60"L x 24"D sink no pipeskirt
TSL.Mon.C.90.PS2.SS	60"L x 24"D sink stainless steel pipeskirt, straight
TSL.Mon.C.90.PS2.BK	60"L x 24"D sink black powder coat pipeskirt, straight
TSL.Mon.C.90.PS2.WH	60"L x 24"D sink white powder coat pipeskirt, straight

Related Products

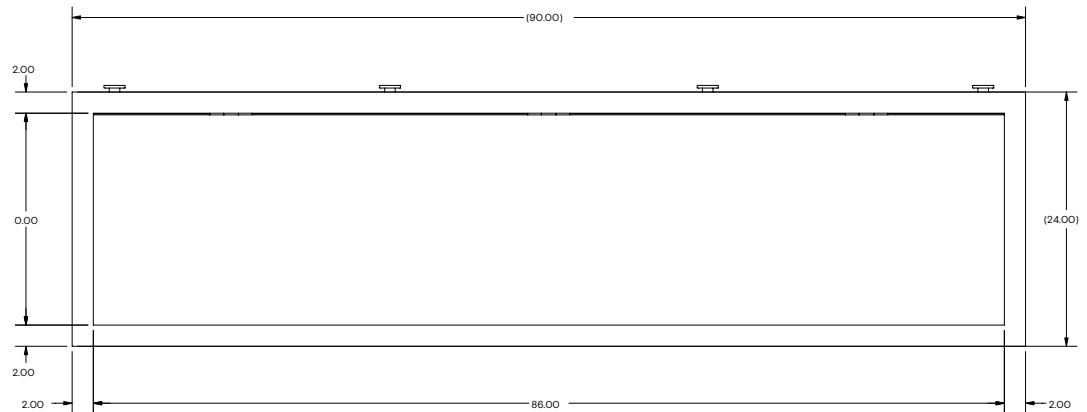
TSL.C.3Set	The Complete Channel System	TSL.Mon.C.30	C Series 1-User
TSL.Mon.A	The Monolith A Series	TSL.Mon.C.60	C Series 2-User
TSL.Mon.D	The Monolith D Series	TSL.Mon.C.120	C Series 4-User

For specifier/architect approval:

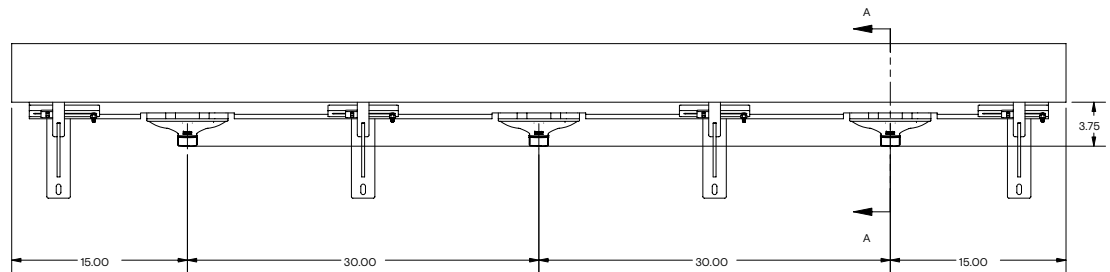
Project name		Pipeskirt finish	
Solid surface brand		Finish name/code	
Signed		Date	

Technical Drawings

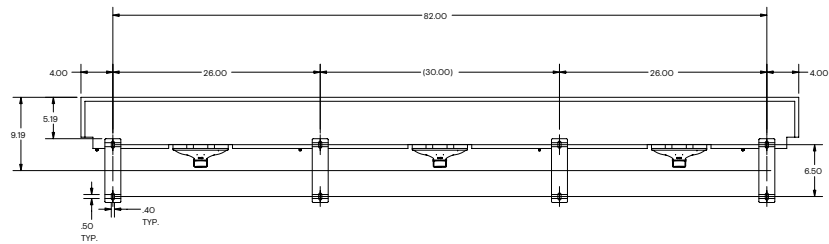
Top



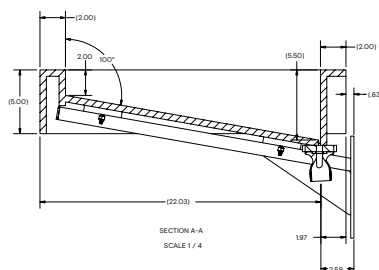
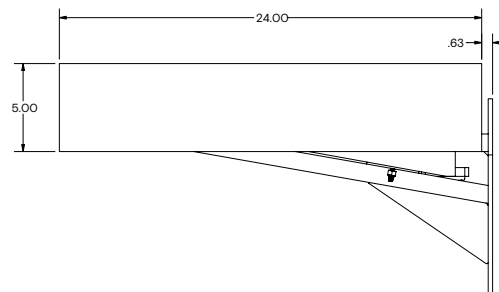
Front



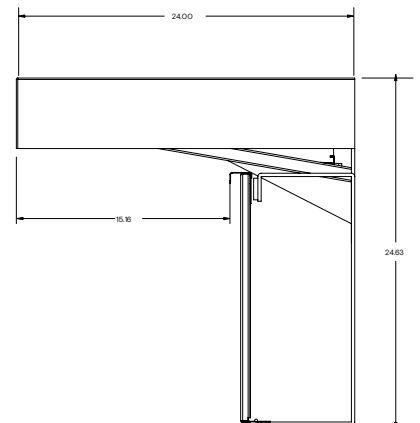
Fixing



Side



Pipeskirts



8745 Washington Boulevard, Studio D
Culver City CA 90232
310 410 5008
info@thesplashlabusa.com
thesplashlabusa.com